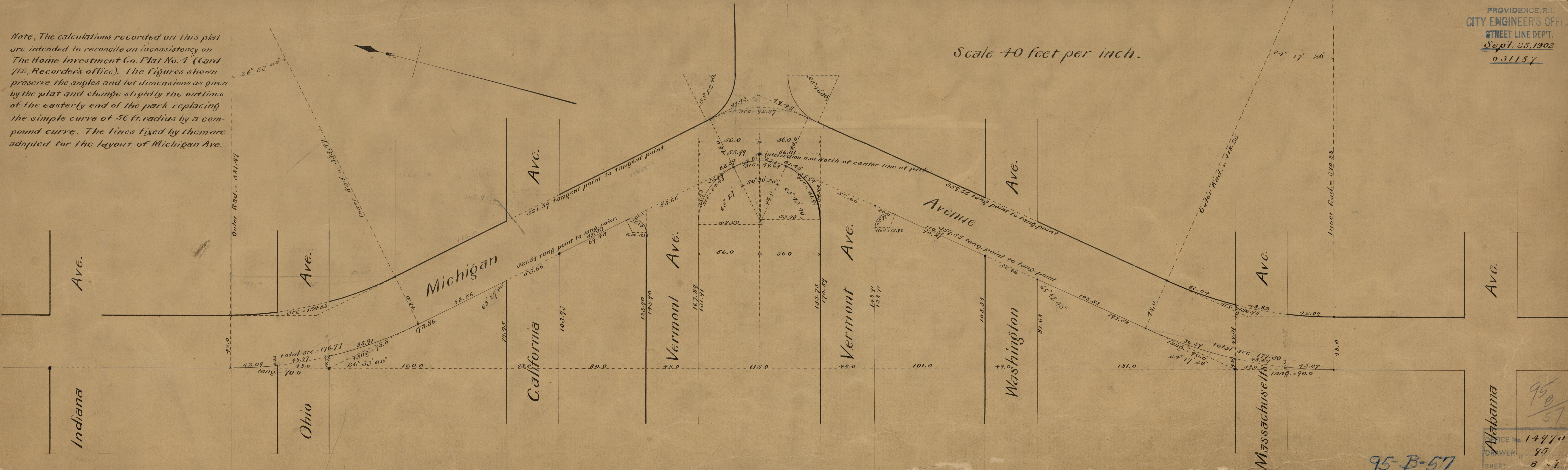


Note, The calculations recorded on this plat are intended to reconcile an inconsistency on "The Home Investment Co. Plat No. 4" (Card 712, Recorder's office). The figures shown preserve the angles and lot dimensions as given by the plat and change slightly the outlines of the easterly end of the park replacing the simple curve of 56 ft. radius by a compound curve. The lines fixed by them are adopted for the layout of Michigan Ave.

Scale 40 feet per inch.



95
57
OFFICE No. 14970
DRAWER 95
SHEET 8-1

95-B-57